

## Smart Relay

Wireless module with voltage-free control contact, wall mounting. It allows you to manage a consent command to a third-party device in a Smart way.



### MAIN FEATURES

- Wall mounting device
- Powered by mains voltage
- Dry contact relay output for loads up to 13A
- Weekly chrono programming via App
- Repeater function within the ZigBee network
- Compatible with Amazon Alexa and Google Home voice assistants \*

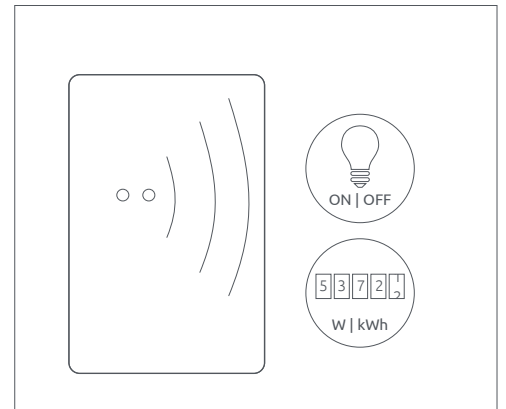
### TYPICAL APPLICATIONS

Generation of consent commands to:

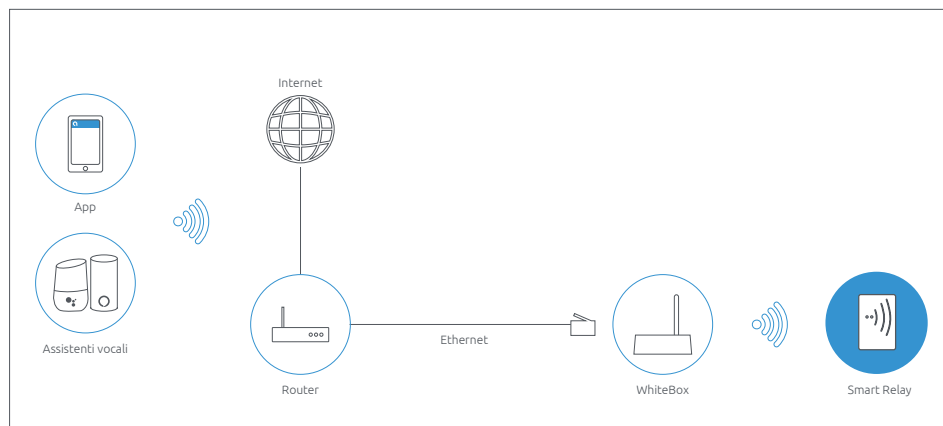
- Heat pumps
- Home automation systems
- Electric stoves
- Air conditioners

### FUNCTIONS MANAGED FROM APP \*

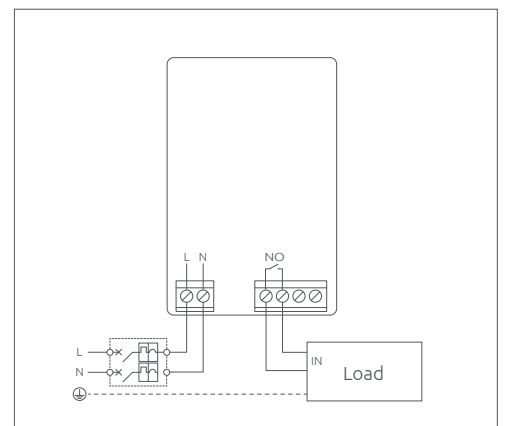
- Instant visualization of the command output status
- Possibility to extrapolate the measured data in Excel file
- Chrono programming
- Geolocated management of ignitions
- Photovoltaic self-consumption function



### CONNECTION DIAGRAM



### WIRING DIAGRAM

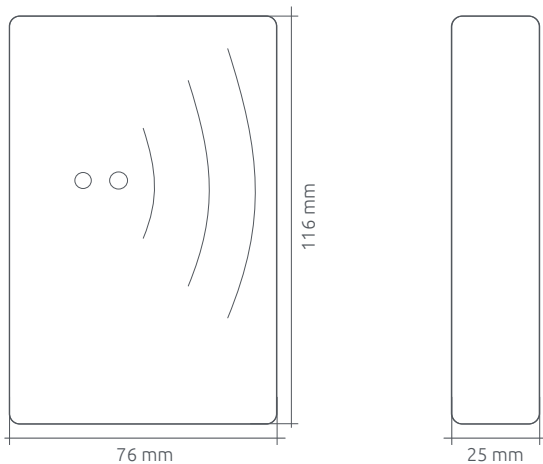


\*) Functions available when paired with WhiteBox

## TECHNICAL SPECIFICATIONS

Type	Specifications
Power supply	90/230Vac 50/60 Hz; 1W
Connections	Screw terminals
Control relay	Contacts rated 230Vac, max current 13A
Ambient parameters	Operating conditions: 0 to +50°C; <80% R.H. n.c. Storage conditions: -20 to +70°C; <80% R.H. n.c.
Dimensions (L x H x D)	76 x 116 x 25 mm
Degree of protection	IP30
Radio specifications	Frequenza: 2.4 GHz ZigBee HA 1.2
Insulation	Class II
Degree of pollution	PD 2
Overvoltage category	III
Conformity	ETSI EN 300 328; ETSI EN 301 489-1; ETSI EN 301 489-17; EN 60730-1; EN60730-2-14 (tipo 1); EN 62479; EN 61000-6-2; EN 61000-6-3

## DIMENSIONS (MM)



## PART NUMBER

Code	Description
ZR-RELAY-RI	Wireless dry contact Relay