

# Energy Meter Single-Phase Wall

Wireless monophasic type power and energy meter, easy to install due to extendable amperometric transformer and wall fixing.



## MAIN FEATURES

- Monitoring of the energy consumption of a single-phase load / line via App
- Unidirectional current flow measurement
- Simple installation without tampering with the system
- Quick installation thanks to the openable current transformer (TA)
- Power measurement up to 15kW
- Repeater function within the ZigBee network

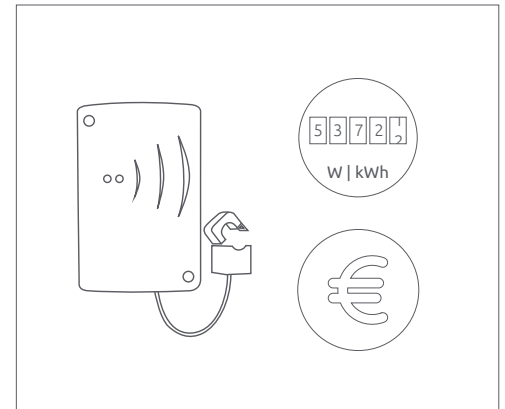
## TYPICAL APPLICATIONS

Energy monitoring of:

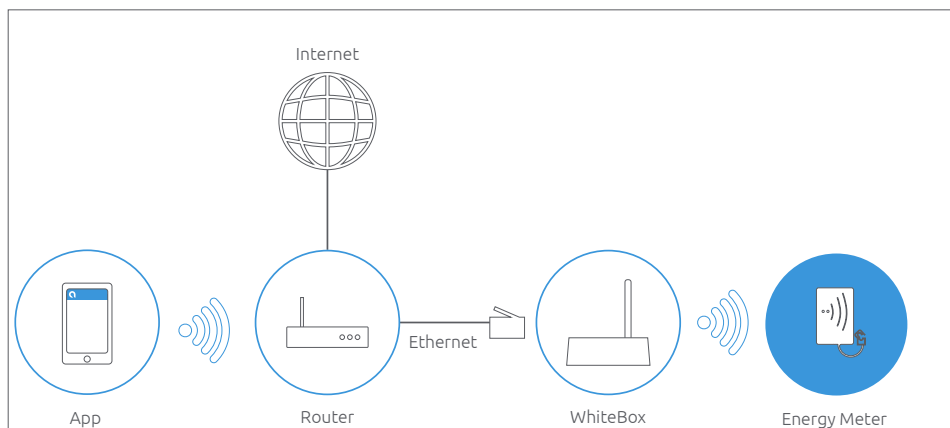
- Offices
- Business premises
- Second houses
- Small businesses
- Consumption of heat pumps

## FUNCTIONS MANAGED FROM APP \*

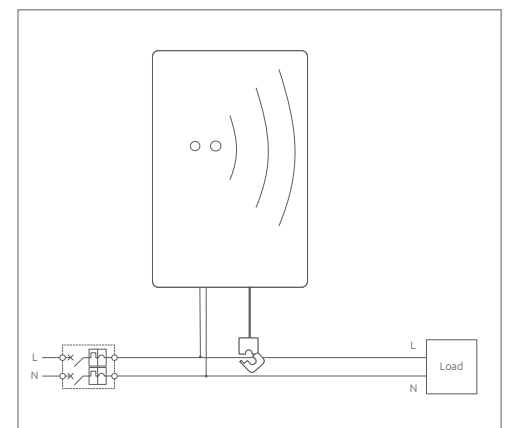
- Visualization of instantaneous power consumed
- Visualization of history consumption
- Energy cost estimation in €
- Possibility to extrapolate the measured data in Excel file



## CONNECTION DIAGRAM



## WIRING DIAGRAM

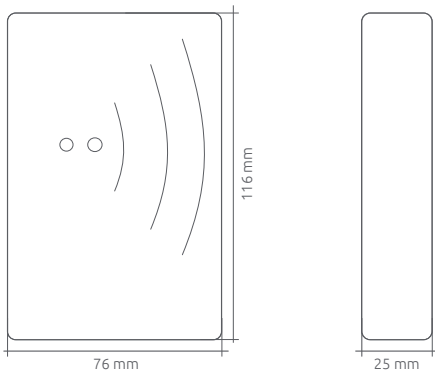


\*) Functions available when paired with WhiteBox

## TECHNICAL SPECIFICATIONS

Type	Specifications
Supply voltage	90/230Vac 50/60 Hz; 1W
Connections	Screw clamps
Measurement mode	Openable TA (included)
Measurements	Active power [W]; Active energy [kWh]
Maximum measurable power	15 kW
Ambient parameters	Operating conditions: 0 to +50°C; <80% R.H. n.c. Storage conditions: -20 to +70°C; <80% R.H. n.c.
Dimensions (L x H x D)	76 x 116 x 25 mm
Degree of protection	IP30
Radio specifications	Frequency: 2.4 GHz ZigBee HA 1.2
Insulation	Class I
Degree of pollution	PD2
Overvoltage category	II
Conformity	ETSI EN 300 328; ETSI EN 301 489-1; ETSI EN 301 489-17; EN 60730-1; EN60730-2-14 (type 1); EN 62479; EN 61000-6-2; EN 61000-6-3
Measurement accuracy	±5% max

## DIMENSIONS (MM)



## PART NUMBER

Code	Description
ZR-HM.W-RI	Energy and power meter up to 15kW